

DATA SHEET

SI 1850

Centrifugal pump

Sauermann® part #: SI1850SIUN23



Large tank pump – Hot water

The SI 1850 pump is designed to evacuate heavy and contaminated condensates. Capable of evacuating up to 1100 l/h, the SI 1850 pump is suitable for air conditioning units and industrial refrigeration displays. Strong, the SI 1850 tolerates charged, high temperature and acidic condensates ($\text{pH} > 3.4$) produced by gas condensing boilers

Benefits



High performance

- Integrated big tank of 3.8 liters (1 gal).
- Can discharge condensates up to 10 m.
- Up to 1100 l/h.



Safety

- Normally closed alarm contact.



High resistance

- Suitable for mild acid and hot condensate. ($\text{pH} \geq 3.4$ and $T^\circ \leq 87^\circ \text{C}$)
- Thermal protection at 135°C (auto-reset).



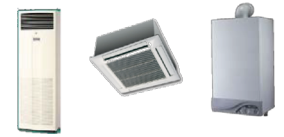
Kit content

- One-piece centrifugal pump with tank (3.8 l)
- Integrated barb end check valve \varnothing ext. 10 mm (3/8")

Technical specification




Max. flow rate	1100 l/h
Max. discharge head	10 m
Max pressure	11 m (flowrate = 0)
Mains supply	230 V~ 50 Hz - 220 W
Sound level in application at 1m (3.3ft): ≤ 66 dBA (Measured in Sauermann acoustic lab, pump operating with water)	
Detection levels	ON: 81 mm, OFF: 48 mm, Safety: 101 mm
Safety switch	NC 4 A resistive – 250V
Max. condensate temperature	87 °C
Max. condensate acidity	pH > 3.4 (Gas condensing boilers)
Thermal protection (overheating)	135 °C (auto-reset)
Operating conditions	100 % - Continuous duty
Protection	IP20
Safety standards	CE - EAC - UKCA
RoHS directive	Compliant
WEEE directive	Compliant
Pump dimensions	L 305 x W 152 x H 257 mm
Weight (including box)	5.9 kg
Packaging	3 pieces

Applications



- Column air conditioning units
- Multi cassettes
- Gas condensing boilers
- High efficiency gas furnace
- Refrigerating display cabinets
- Evaporators
- Ducted units

Accessories

Name	#Part
 Hose: 25 m Ø int. 10 mm (3/8")	ACC00911 ACC00915 (braided)
 Float detector Used to operate an additional alarm or switch on the pump.	ACC00601
Adaptators  Ø int. 24/25 mm Ø int. 32 mm Ø int. 40 mm	ACC00936 ACC00937 ACC00938

Actual flow rates (l/h)

Vertical Discharge head	Total tube length (Ø int. 10 mm, 3/8")				Vertical Discharge head	Total tube length (Ø int. 10 mm, 3/8")			
	5 m	10 m	20 m	30 m		5 m	10 m	20 m	30 m
1 m	750	590	375	285	6 m		355	255	190
2 m	675	545	345	270	7 m		300	185	160
3 m	600	500	310	255	8 m		240	145	125
4 m	520	460	285	235	9 m		170	100	85
5 m	450	410	255	215	10 m		85	60	45